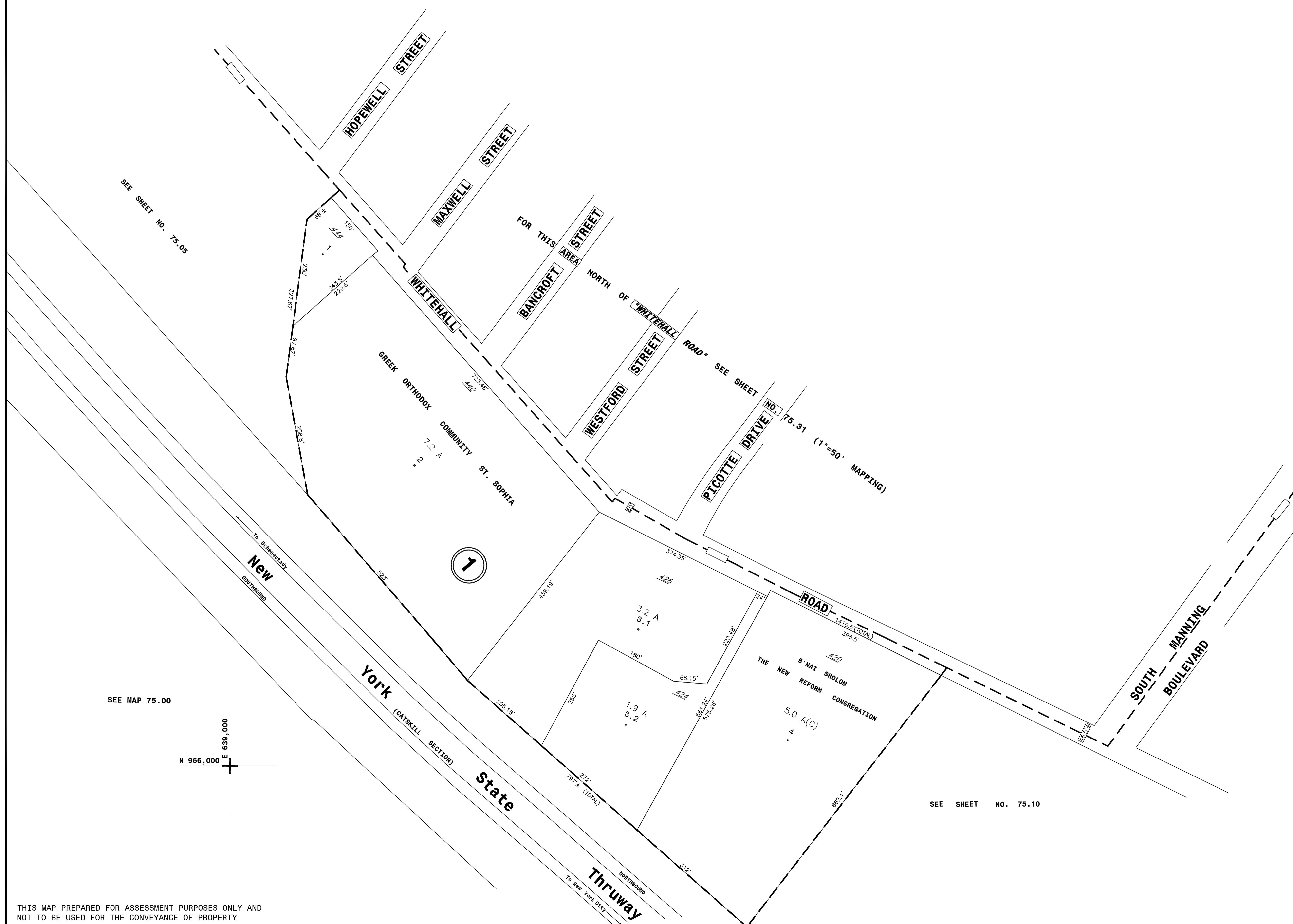


N 968,000
E 639,000

N 968,000
E 642,000



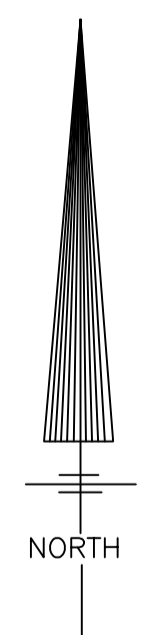
SEE SHEET NO. 75.05

FOR THIS AREA NORTH OF WHITEHALL ROAD* SEE SHEET NO. 75.31 (1"=50' MAPPING)

SEE MAP 75.00

SEE SHEET NO. 75.10

E 642,000
N 966,000



THIS MAP PREPARED FOR ASSESSMENT PURPOSES ONLY AND NOT TO BE USED FOR THE CONVEYANCE OF PROPERTY

NYS PLANE COORDINATE SYSTEM NAD83
© Copyright 2012
County of Albany, NY, USA

AUTHORIZED BY:
ORDINANCE OF THE COMMON COUNCIL
PASSED AUGUST 21, 1972

PREPARED BY:
SMITH & MAHONEY, CONSULTING ENGINEERS
ALBANY, NEW YORK

DIGITAL CONVERSION BY:
THE SANBORN MAP COMPANY INC.
PELHAM, NEW YORK

REVISION TABLE			
DATE	MADE BY	CHANGES OR ADDITIONS	
6-30-75	J.K.D.	REVISED R.O.W. OF WHITEHALL ROAD	
5-2-90	DB	ADDED 1-3.2 PER CITY MAP 1722	

REVISION TABLE			
DATE	MADE BY	CHANGES OR ADDITIONS	

REVISION TABLE			
DATE	MADE BY	CHANGES OR ADDITIONS	

PROPERTY LINE		CITY LINE		TAX DISTRICT LINE		GREAT LOT NO.	
ORIGINAL LOT LINE	---	VILLAGE LINE	---	FIRE DISTRICT LINE	---		
RAIL ROAD	---	TOWN LINE	---	DENOTES COMMON OWNER	---		
STREAM OR DITCH	---	BLOCK LIMIT	---	TAX MAP BLOCK NO.	---		
ROAD OR RAIL ROAD BNDY.	---	GREAT LOT LINE	---	TAX MAP PARCEL NO.	---	76.00-1-11	
STREET CENTERLINE	---	EASEMENT LINE	---	STREET NUMBER	---	24	
COUNTY LINE	---	WATER DISTRICT LINE	---	FILED PLAN LOT NO.	---	27	

SHEET INDEX			
64.17	75.31	75.32	
75.05	75.10	75.40	
75.09	75.10	75.11	

TAX MAP **75.06**

CITY OF ALBANY
ALBANY COUNTY, NEW YORK

SCALE: 1"=100'

TAXABLE STATUS DATE: 3/1/12

TAX MAP UPDATED THROUGH MARCH 1, 2012