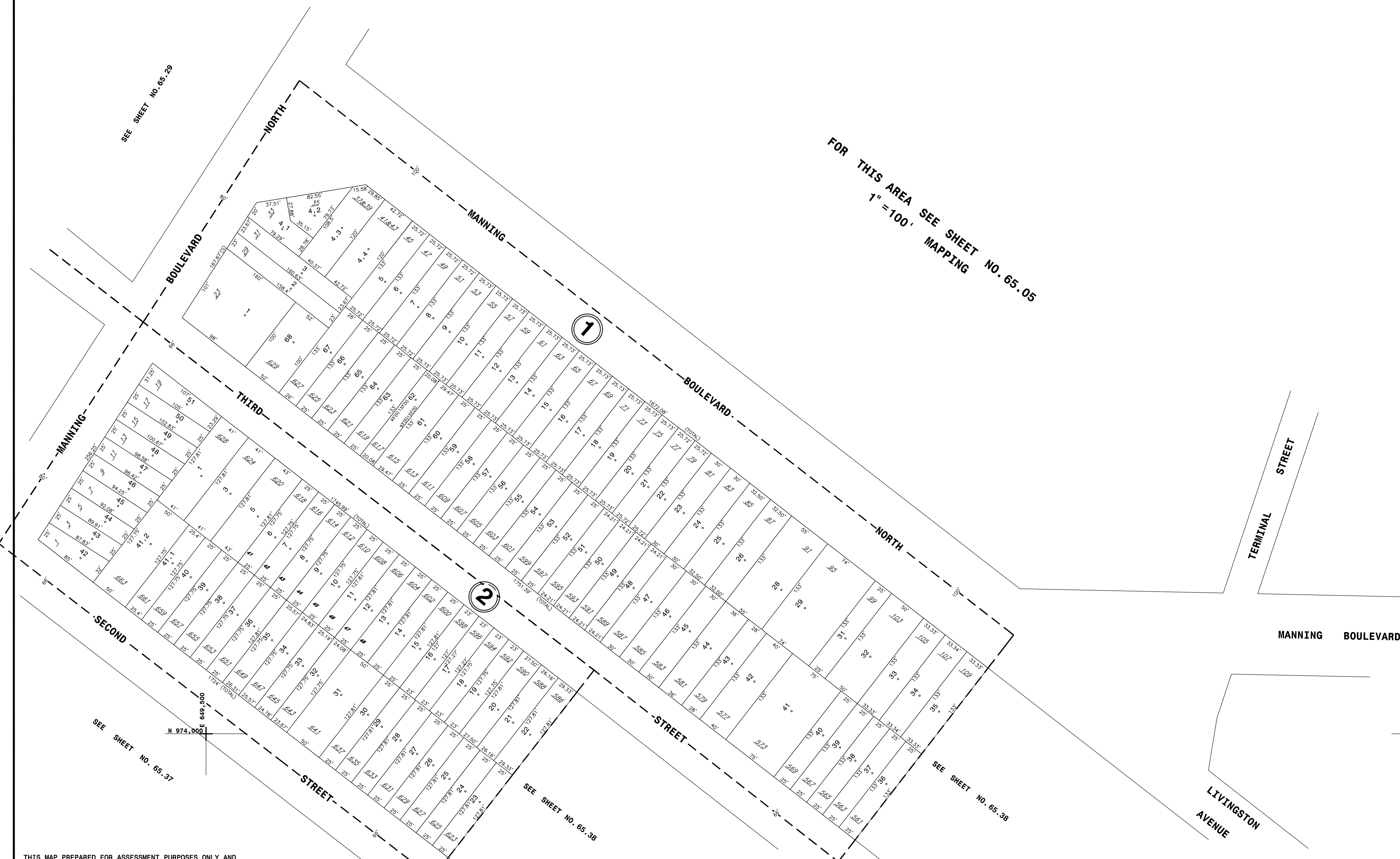


N 975,000
E 649,500

N 975,000
E 651,000

SEE SHEET No. 65.29

FOR THIS AREA SEE SHEET NO. 65.05
1" = 100' MAPPING

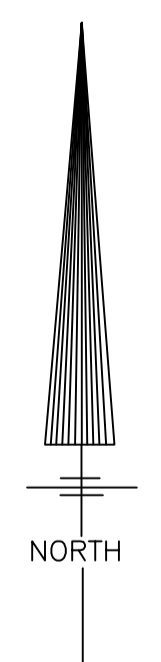


SEE SHEET NO. 65.37

SEE SHEET NO. 65.38

SEE SHEET NO. 65.38

N 974,000
E 651,000



THIS MAP PREPARED FOR ASSESSMENT PURPOSES ONLY AND NOT TO BE USED FOR THE CONVEYANCE OF PROPERTY

AUTHORIZED BY:
ORDINANCE OF THE COMMON COUNCIL
PASSED AUGUST 21, 1972

PREPARED BY:
SMITH & MAHONEY, CONSULTING ENGINEERS
ALBANY, NEW YORK

DIGITAL CONVERSION BY:
THE SANBORN MAP COMPANY INC.
PELHAM, NEW YORK

REVISION TABLE		
DATE	MADE BY	CHANGES OR ADDITIONS
1-16-91	LML	DEL. 1-27 MERGED W/1-28 PER CITY MAP 1784
3-31-95	JV	DEL. 1-30 MERGED W/1-28 PER CITY MAP 1784
3-6-96	RJM	DEL. 2-2 & 2-4 MERGE W/2-1
8-16-97	JHD	CREATED 2-411 & 412 PER MAP 2043 SUBD 1-4 INTO 4.1, 4.2, 4.3, 4.4 PER CITY MAP 2486

REVISION TABLE		
DATE	MADE BY	CHANGES OR ADDITIONS

REVISION TABLE		
DATE	MADE BY	CHANGES OR ADDITIONS

LEGEND	
PROPERTY LINE	---
ORIGINAL LOT LINE	---
RAIL ROAD	---
STREAM OR DITCH	---
ROAD OR RAIL ROAD BNDY.	---
STREET CENTERLINE	---
COUNTY LINE	---
CITY LINE	---
VILLAGE LINE	---
TOWN LINE	---
BLOCK LIMIT	---
GREAT LOT LINE	---
EASEMENT LINE	---
WATER DISTRICT LINE	---
TAX DISTRICT LINE	---
FIRE DISTRICT LINE	---
DENOTES COMMON OWNER	---
TAX MAP BLOCK NO.	---
TAX MAP PARCEL NO.	---
STREET NUMBER	---
FILED PLAN LOT NO.	---
GREAT LOT NO.	---
CALCULATED ACREAGE	---
DEED ACREAGE	---
SCALED DIMENSION	---
DEED DIMENSION	---
VISUAL CENTER OF PARCEL	---

DATE	MADE BY	CHANGES OR ADDITIONS

DATE	MADE BY	CHANGES OR ADDITIONS

TAX MAP 65.30

CITY OF ALBANY
ALBANY COUNTY, NEW YORK

SCALE: 1" = 100'

TAXABLE STATUS DATE: 3/1/12

TAX MAP UPDATED THROUGH MARCH 1, 2012