

APPROVED BY:  
 NEW YORK STATE BOARD OF  
 EQUALIZATION AND ASSESSMENT  
 AUTHORIZED SIGNATURE: S/ JOSEPH TAGGERT  
 CASE NUMBER: 1638 DATE: FEBRUARY 4, 1980

THIS MAP PREPARED FOR ASSESSMENT PURPOSES ONLY  
 AND NOT TO BE USED FOR THE CONVEYANCE OF PROPERTY

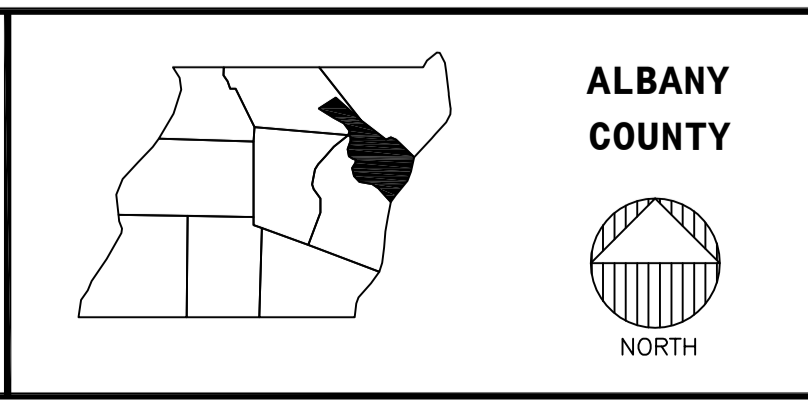
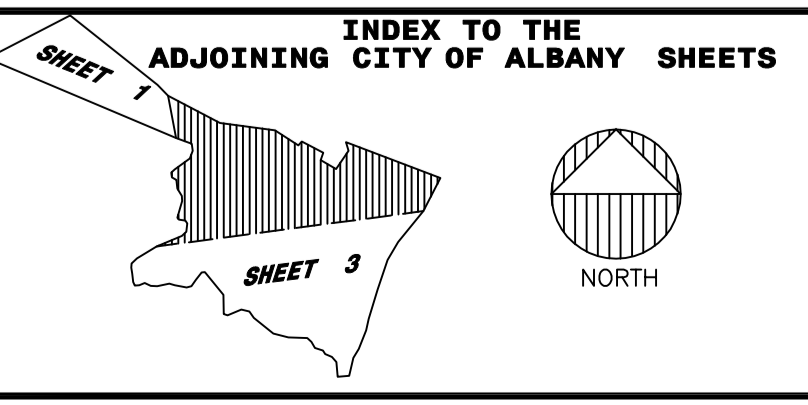
AUTHORIZED BY:  
 ORDINANCE OF THE COMMON COUNCIL  
 PASSED MAY 20, 1974  
 PREPARED BY:  
 SMITH & MAHONEY CONSULTING ENGINEERS  
 ALBANY, NEW YORK

MODULAR MAP BREAKDOWN	
01	02
03	04

DATE	BY	CHANGES OR ADDITIONS
9-20-78	JMS	REVISED PER NEW MAP 53.00
10-16-78	JMS	MOVED LINEWORK, RIGHT OF WAY ETC FROM 66.08 TO 66.05 AND OTHERS
10-31-78	JMS	MOVED LINEWORK RIGHT OF WAY ETC FROM 63.68 TO 63.76 AND REVISED MAP 63.68

DATE	BY	CHANGES OR ADDITIONS
9-20-78	JMS	REVISED PER NEW MAP 53.00
10-16-78	JMS	MOVED LINEWORK, RIGHT OF WAY ETC FROM 66.08 TO 66.05 AND OTHERS
10-31-78	JMS	MOVED LINEWORK RIGHT OF WAY ETC FROM 63.68 TO 63.76 AND REVISED MAP 63.68

LEGEND	
	STREET OR ROAD
	INTERSTATE HIGHWAY Rte. No. (90)
	U.S. HIGHWAY Rte. No. (20)
	N.Y.S. HIGHWAY Rte. No. (85)
	COUNTY ROAD No. (19)
	TAX MAP SECTION No. 74.00



TAX MAP  
**CITY OF ALBANY**  
 ALBANY COUNTY, NEW YORK  
 GRAPHIC SCALE 1" = 800'  
 TAXABLE STATUS DATE: 3/1/12  
**SHEET 2**  
 INDEX MAP

© Copyright 2012  
 County of Albany, NY, USA