

Washington Park Transportation & Pedestrian Improvements Project

ABOUT THE PROJECT

Purpose and Need

The project proposes the redesign of several internal roadways, sidewalks, and pedestrian paths within historic Washington Park, consistent with the 2022 Washington Park / Center Square Complete Streets Study.

Project Goals

This project will design and implement changes at Washington Park to:

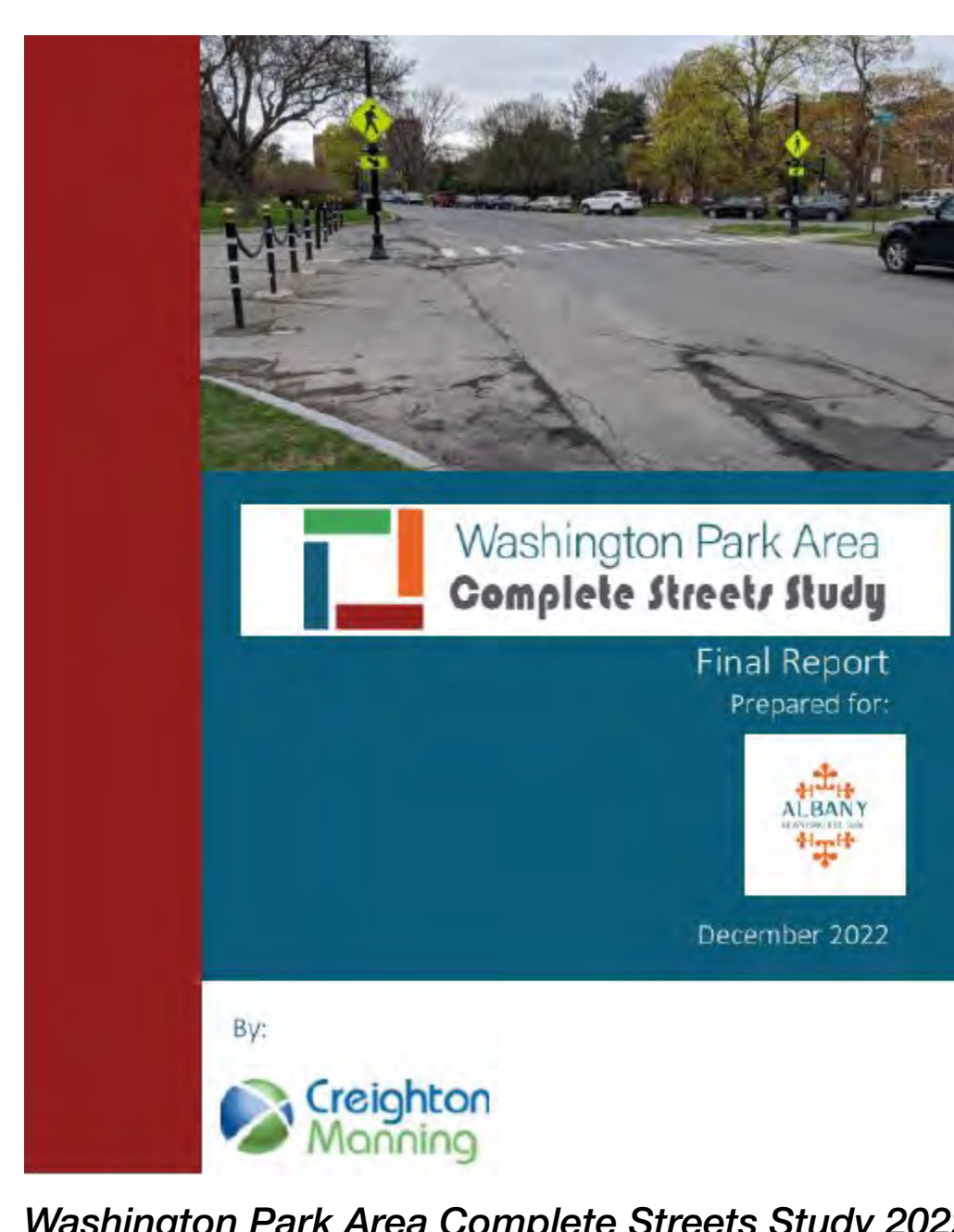
- ▶ Improve mobility, safety, and access for all users
- ▶ Minimize the negative effects of traffic in the project area, while managing the needs of events and access to the Park
- ▶ Implement these transportation changes with input from stakeholders in ways that honor the historic nature of the Park

Project Area

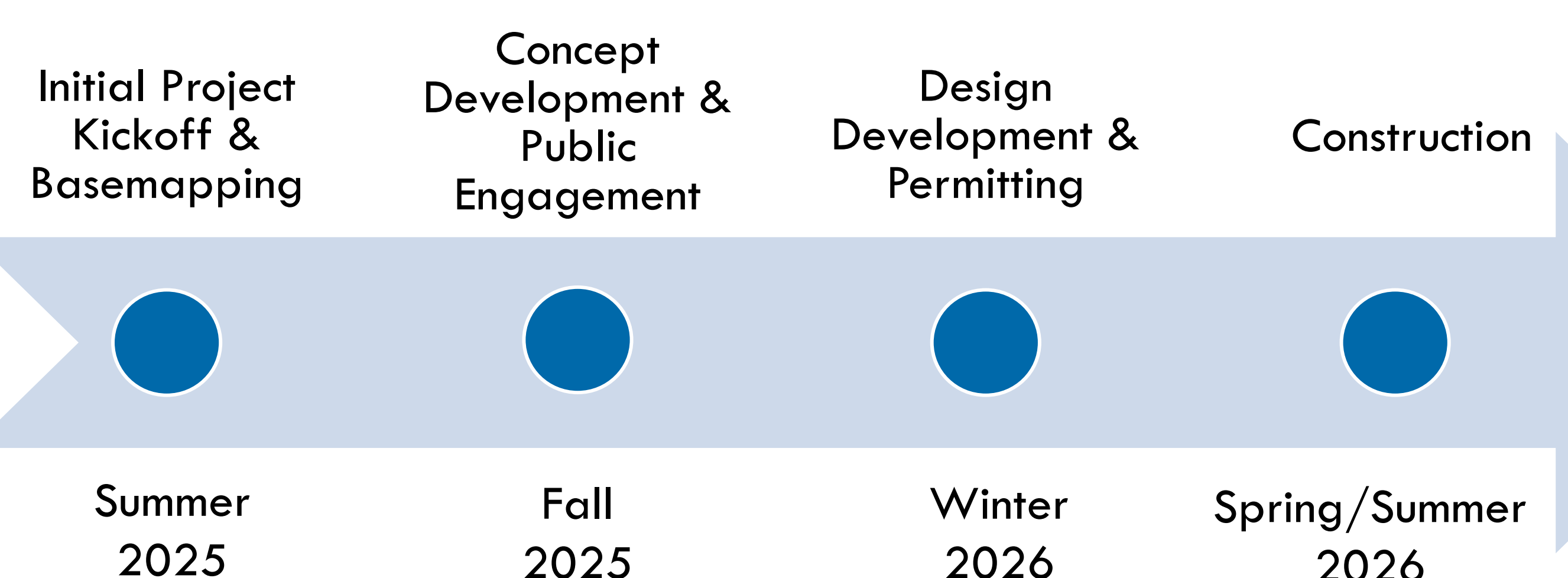


Previous Study

The City of Albany initiated a Complete Streets Traffic Planning Study for the Washington Park Area in 2021. The study evaluated pedestrian, bicycle and vehicle traffic circulation within the area, using a Complete Streets approach to enable safe, convenient, and comfortable travel/access for users of all ages and abilities regardless of their mode of transportation.



Project Schedule

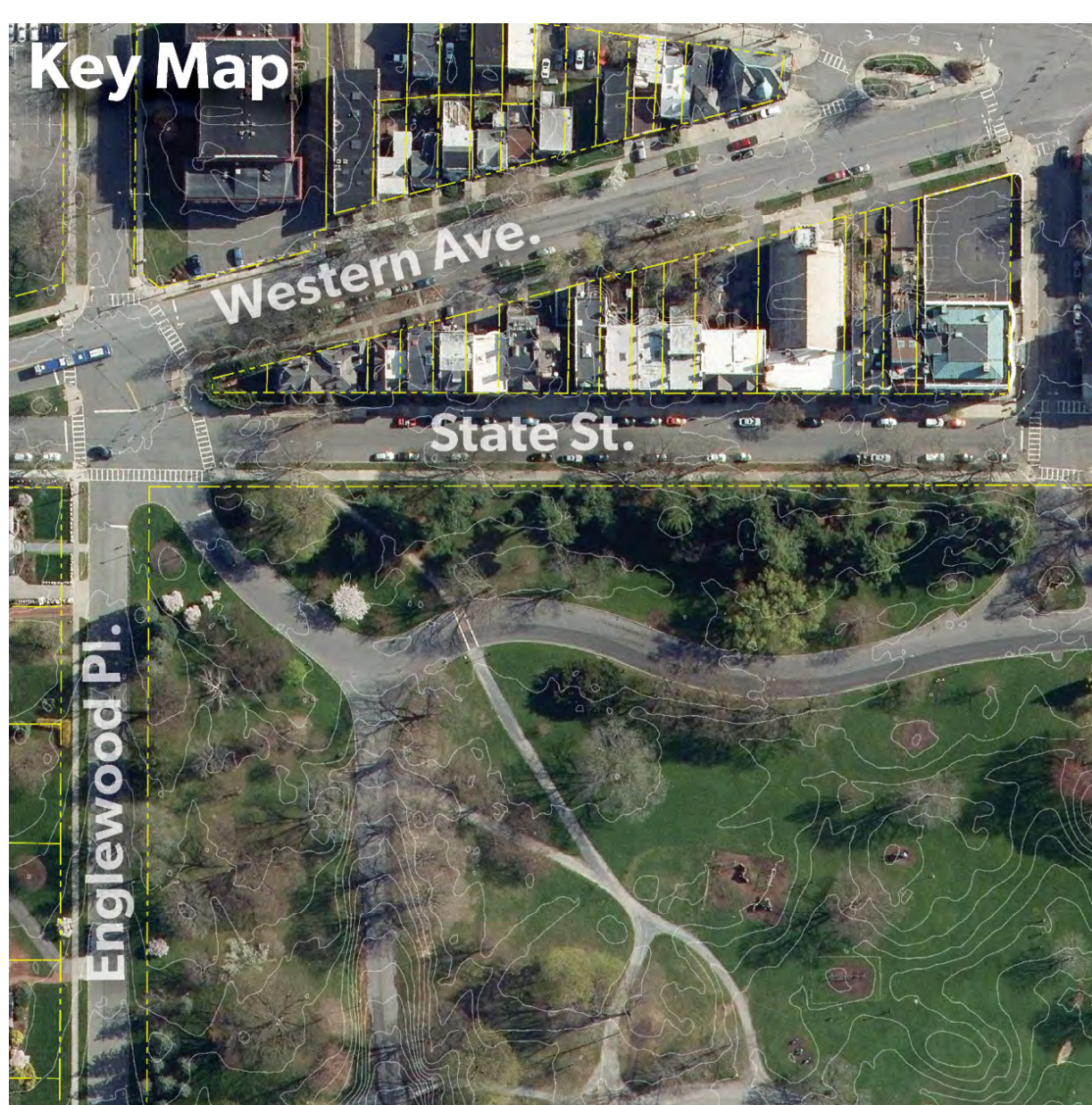
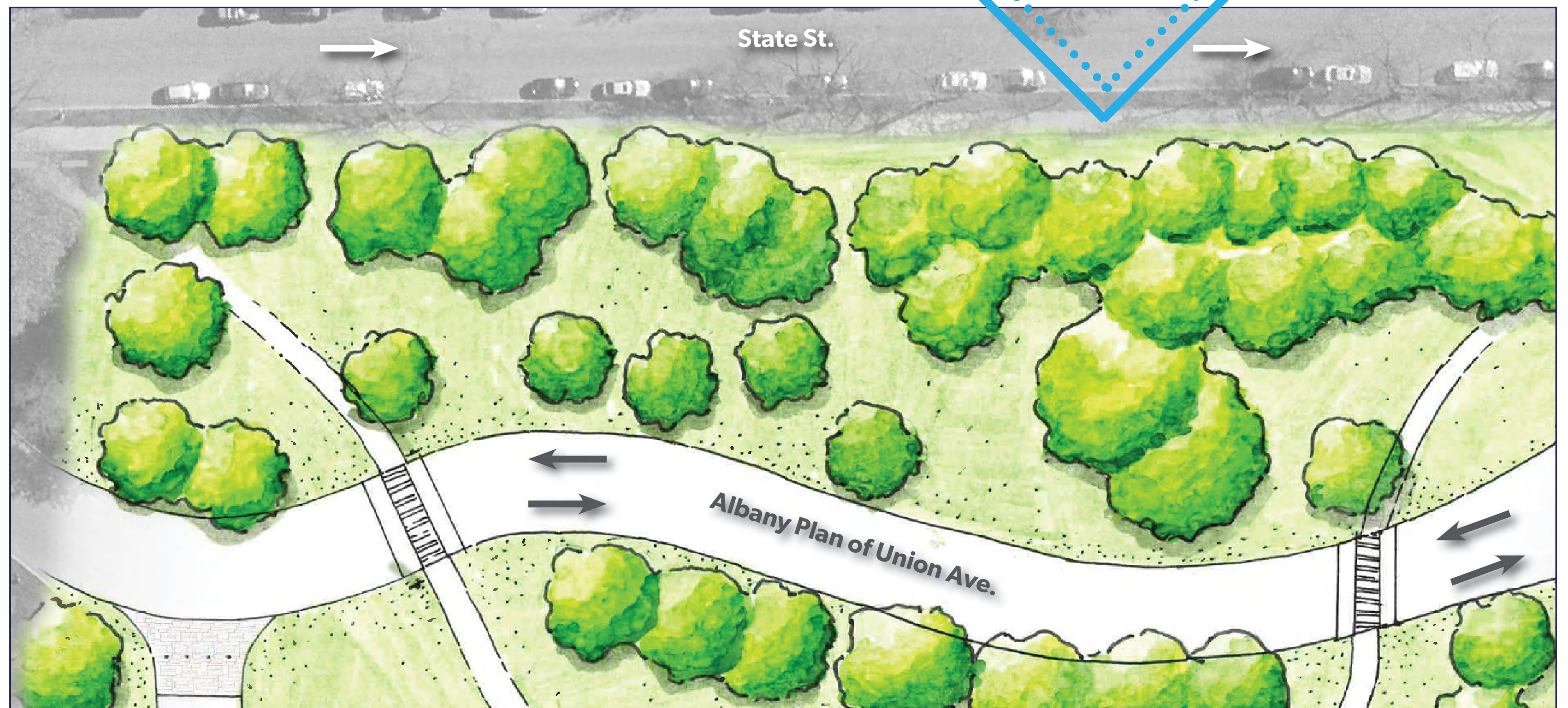


Washington Park Transportation & Pedestrian Improvements Project

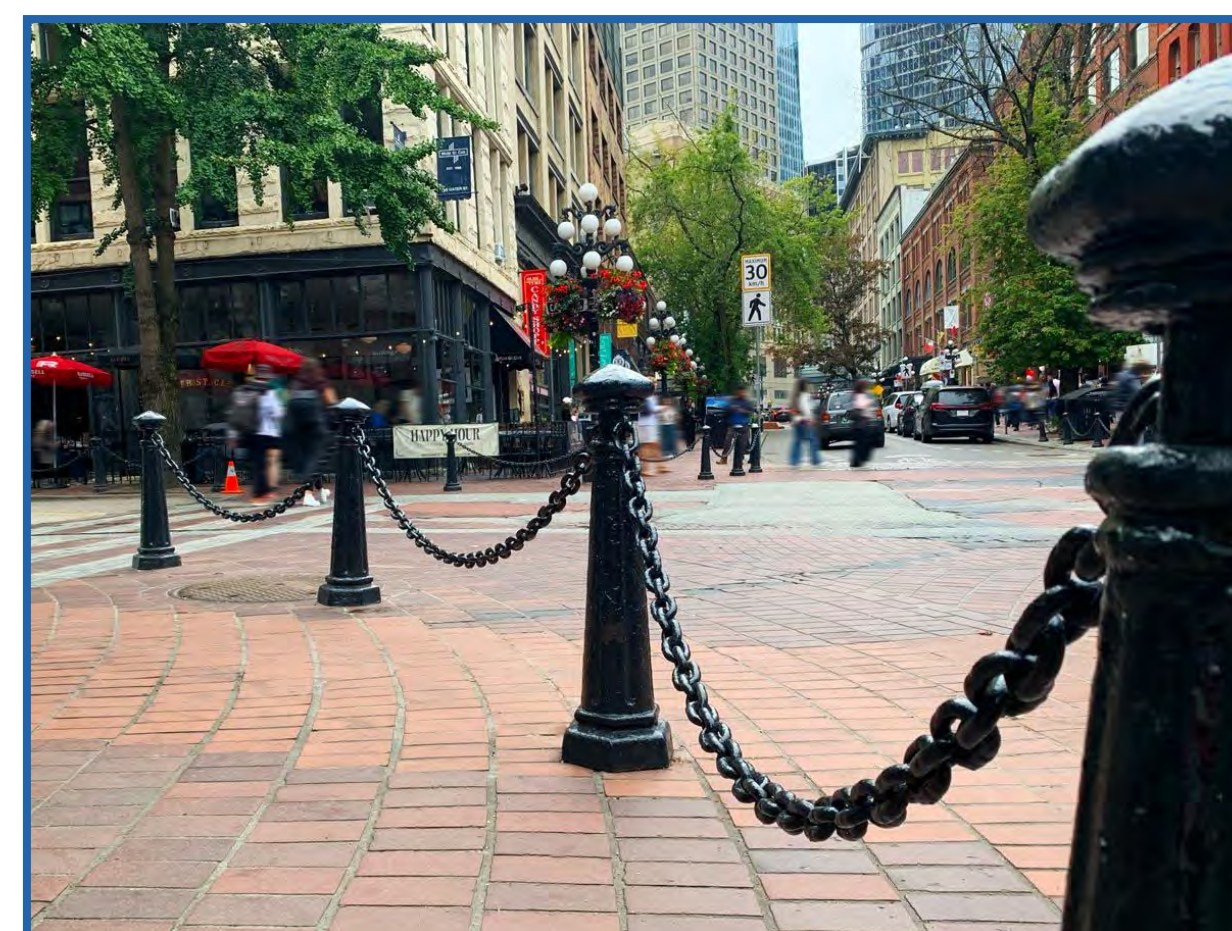
IMPROVEMENT AREAS

ZONE 1 GOALS

- ▶ Add raised crosswalks to slow vehicular traffic and connect pedestrians to new playground project.
- ▶ Re-design service entrance to provide a consistent appearance with textured pavement and gates/bollards to reduce unauthorized access.

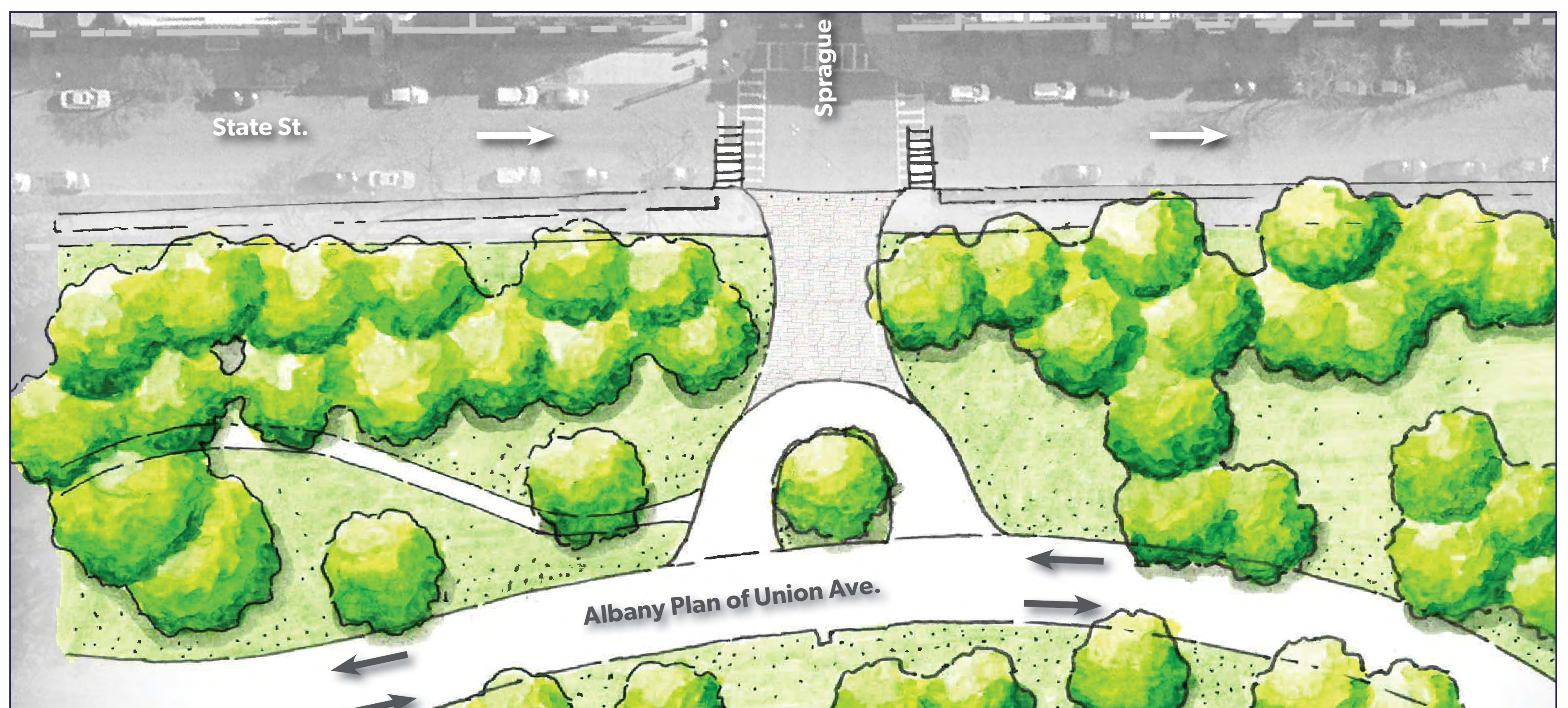


PRECEDENT IMAGES

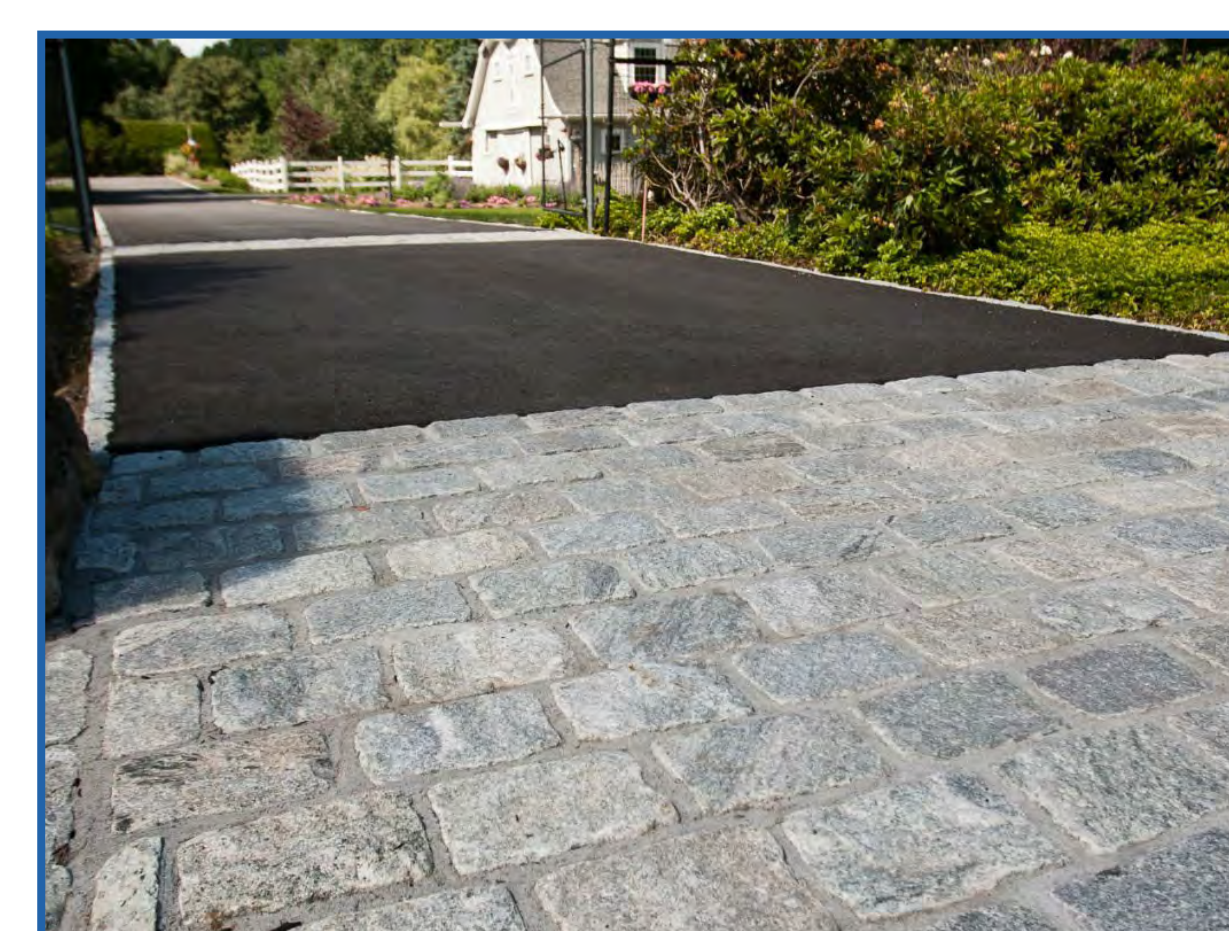


ZONE 2 GOALS

- ▶ Close Sprague Place park entrance to vehicle traffic. Construct raised crosswalk and path connection.
- ▶ Remove existing signals on State Street and Sprague Place and install Rectangular Rapid Flashing Beacons at crosswalks.
- ▶ Establish a new pedestrian path to the new playground area.



PRECEDENT IMAGES

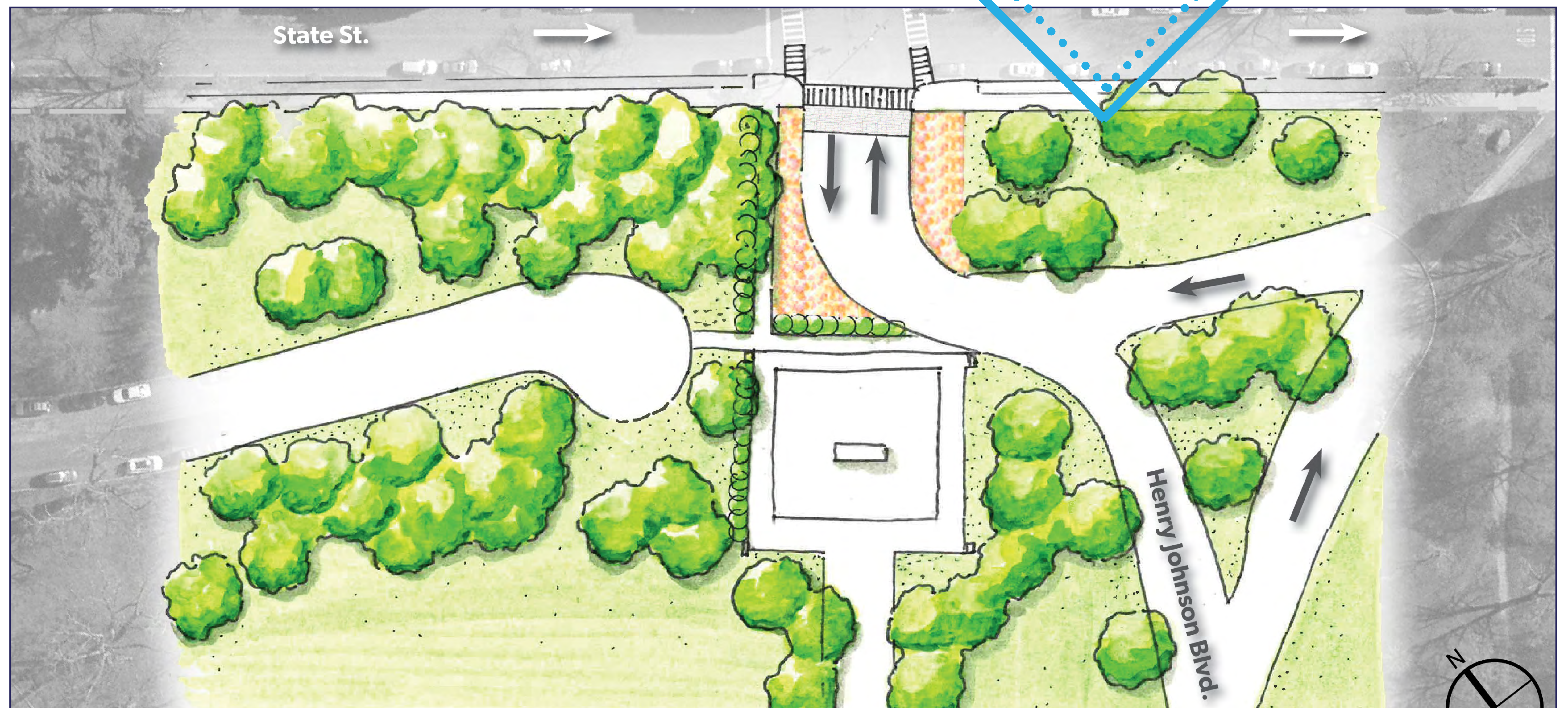


Washington Park Transportation & Pedestrian Improvements Project

IMPROVEMENT AREAS

ZONE 3 GOALS

- ▶ Evaluate options to reduce pedestrian-vehicle conflicts, including removing the west leg of the Henry Johnson Boulevard/Knox Street Mall intersection.
- ▶ Explore possible gateway treatment options at park entrance.

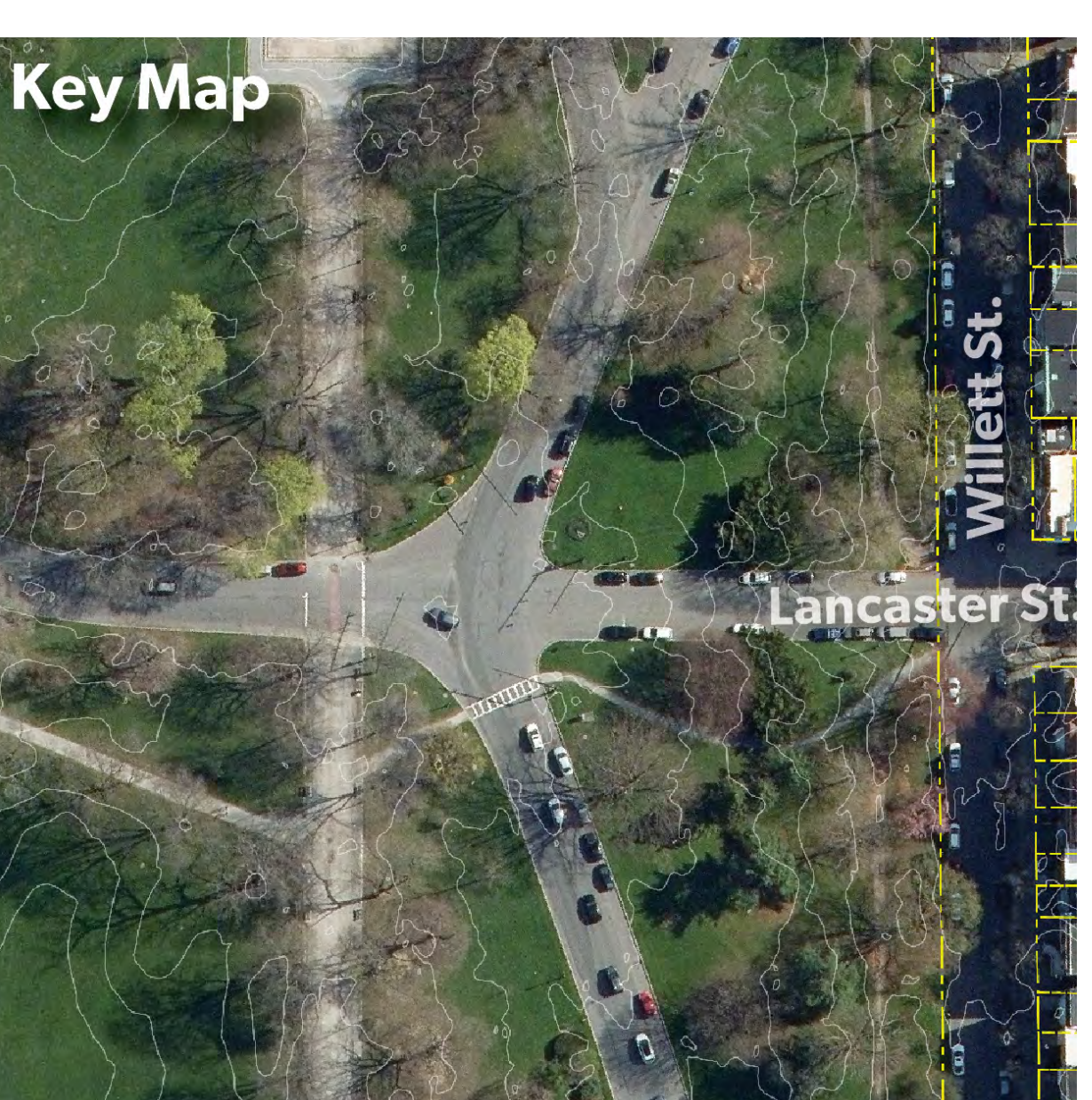


PRECEDENT IMAGES

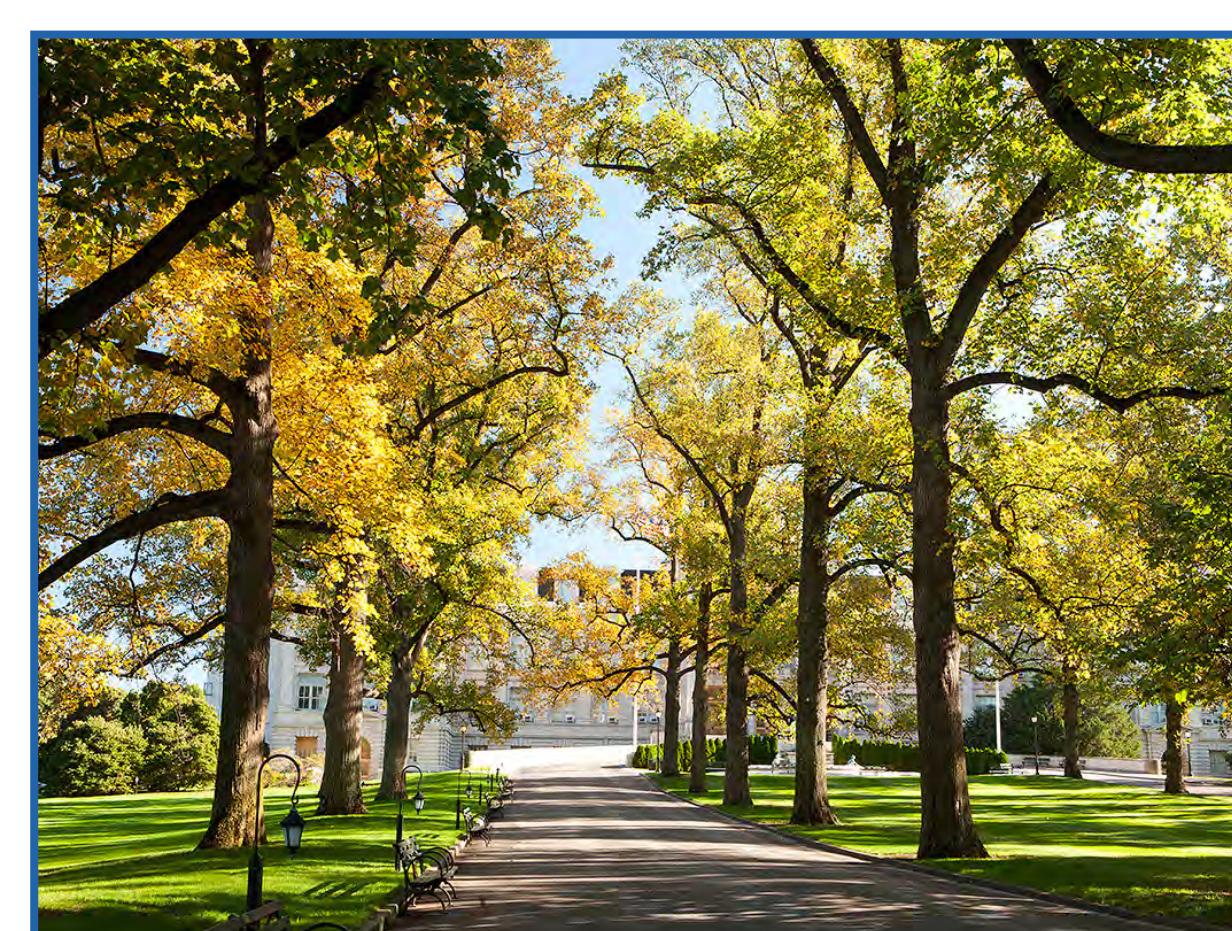
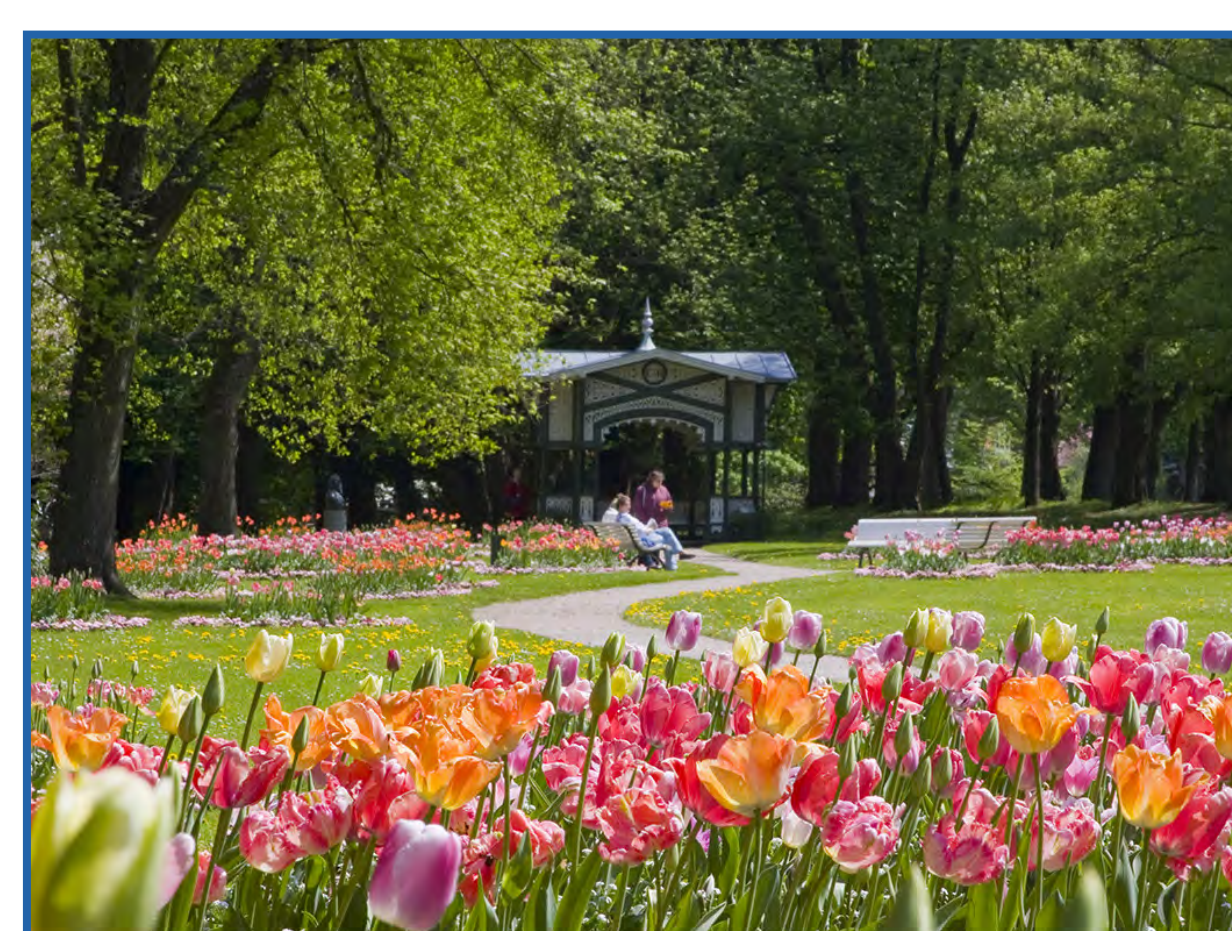


ZONE 4 GOALS

- ▶ Close Lancaster Street park entrance and reconfigure the Henry Johnson Boulevard intersection as a stop controlled y-shaped intersection.
- ▶ Provide new crosswalks and ADA ramps at the intersection of Lancaster Street and Willett Street.
- ▶ Remove existing signal equipment within the park and the intersection of Lancaster Street and Willett Street.



PRECEDENT IMAGES

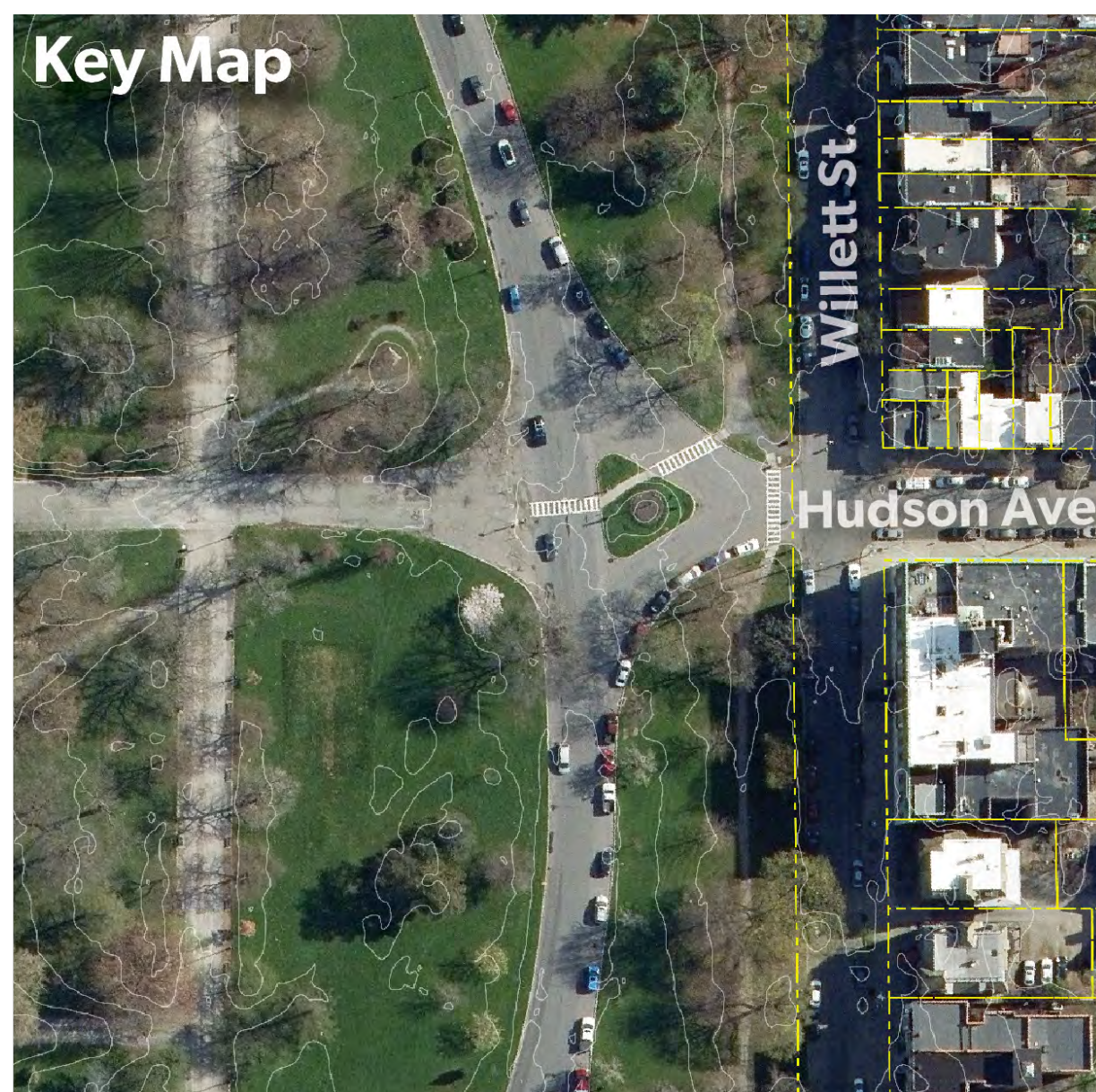


Washington Park Transportation & Pedestrian Improvements Project

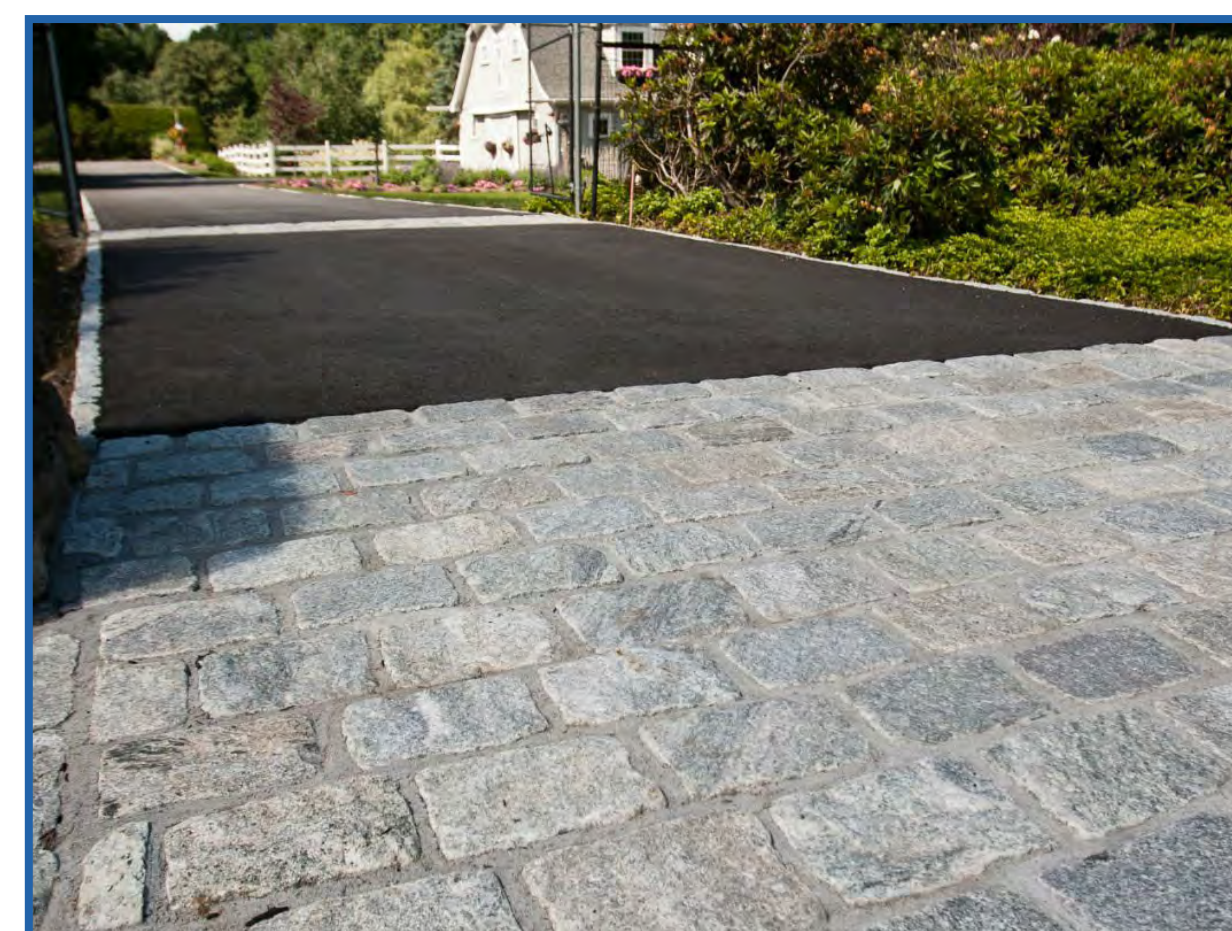
IMPROVEMENT AREAS

ZONE 5 GOALS

- ▶ Reduce pavement on minor legs and convert to one-way. Include improved crosswalk on Henry Johnson Boulevard.
- ▶ Re-design service entrance to provide a consistent appearance with textured pavement and gates/bollards to reduce unauthorized access.
- ▶ Provide new crosswalks and ADA ramps at the intersection of Hudson Avenue and Willett Street.

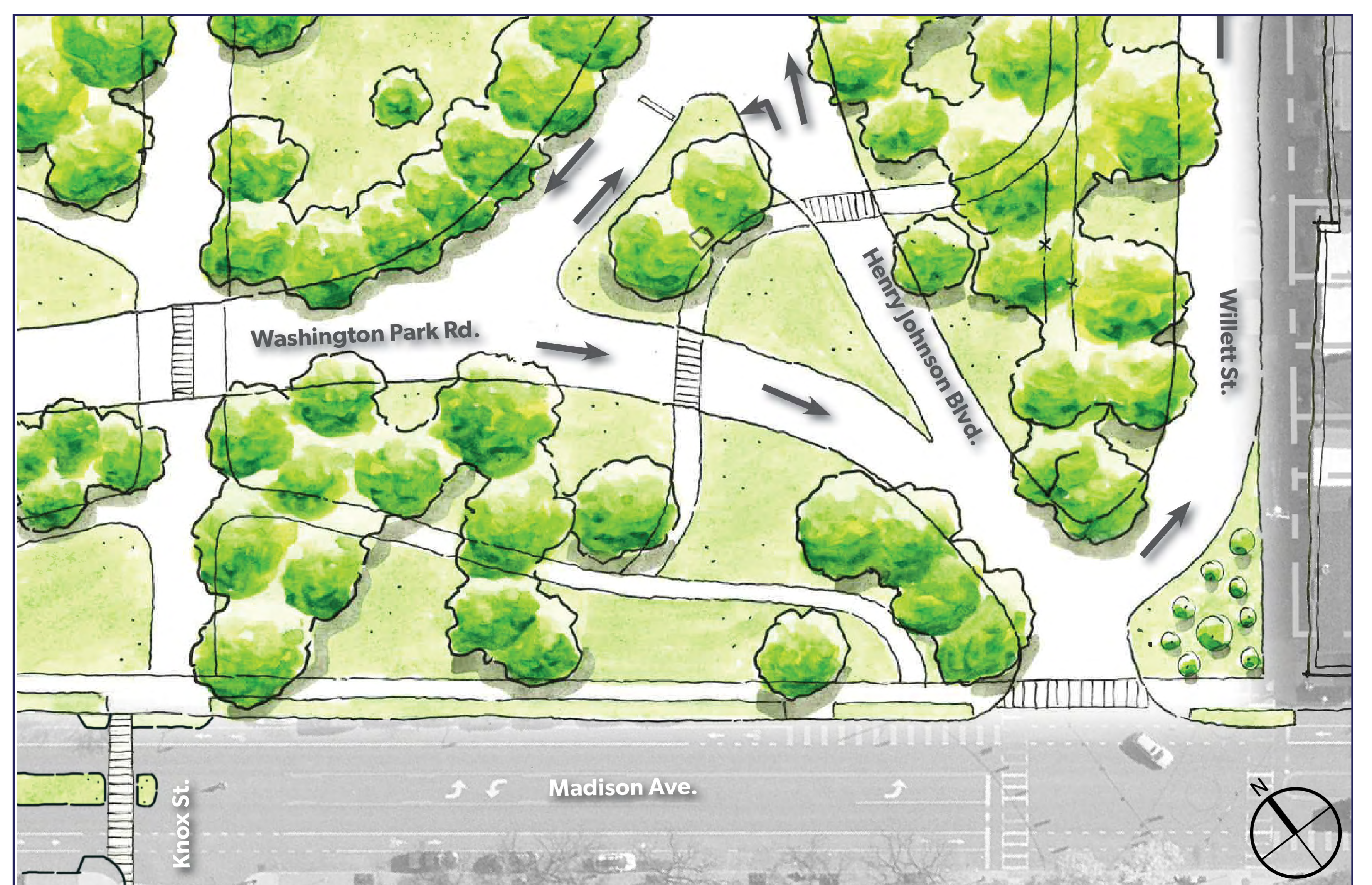


PRECEDENT IMAGES

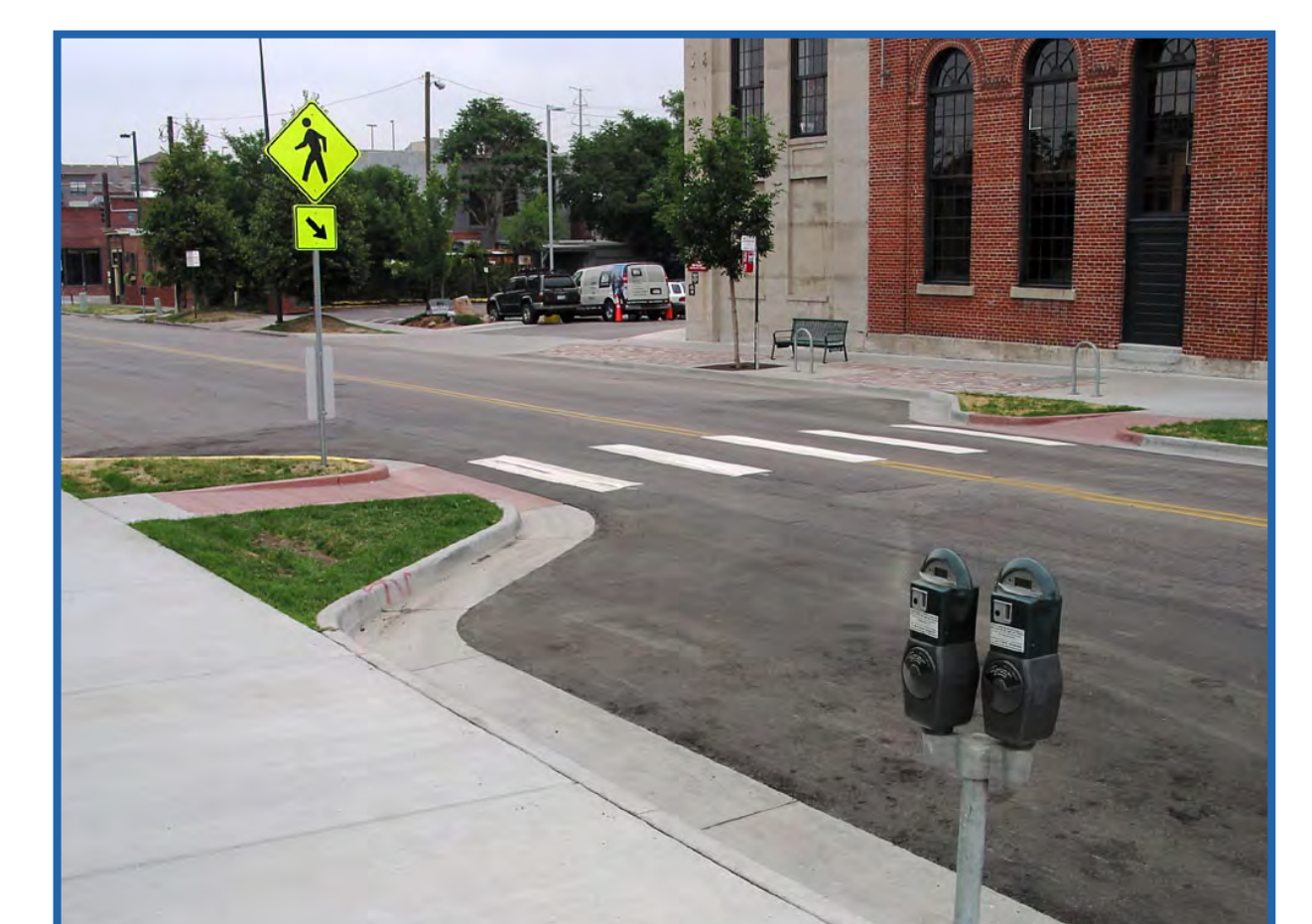


ZONE 6 GOALS

- ▶ Construct an enhanced pedestrian crossing at the Madison Avenue/Knox Street intersection including curb extensions and pedestrian refuge island.
- ▶ Provide enhanced pedestrian crossing on Washington Park Road by adding a curb extension.
- ▶ Reduce pavement width on the minor triangle approaches and convert to one-way traffic.
- ▶ Reconfigure the Madison Avenue/Willett Street intersection to shorten the pedestrian crossing. Add leading pedestrian interval.



PRECEDENT IMAGES

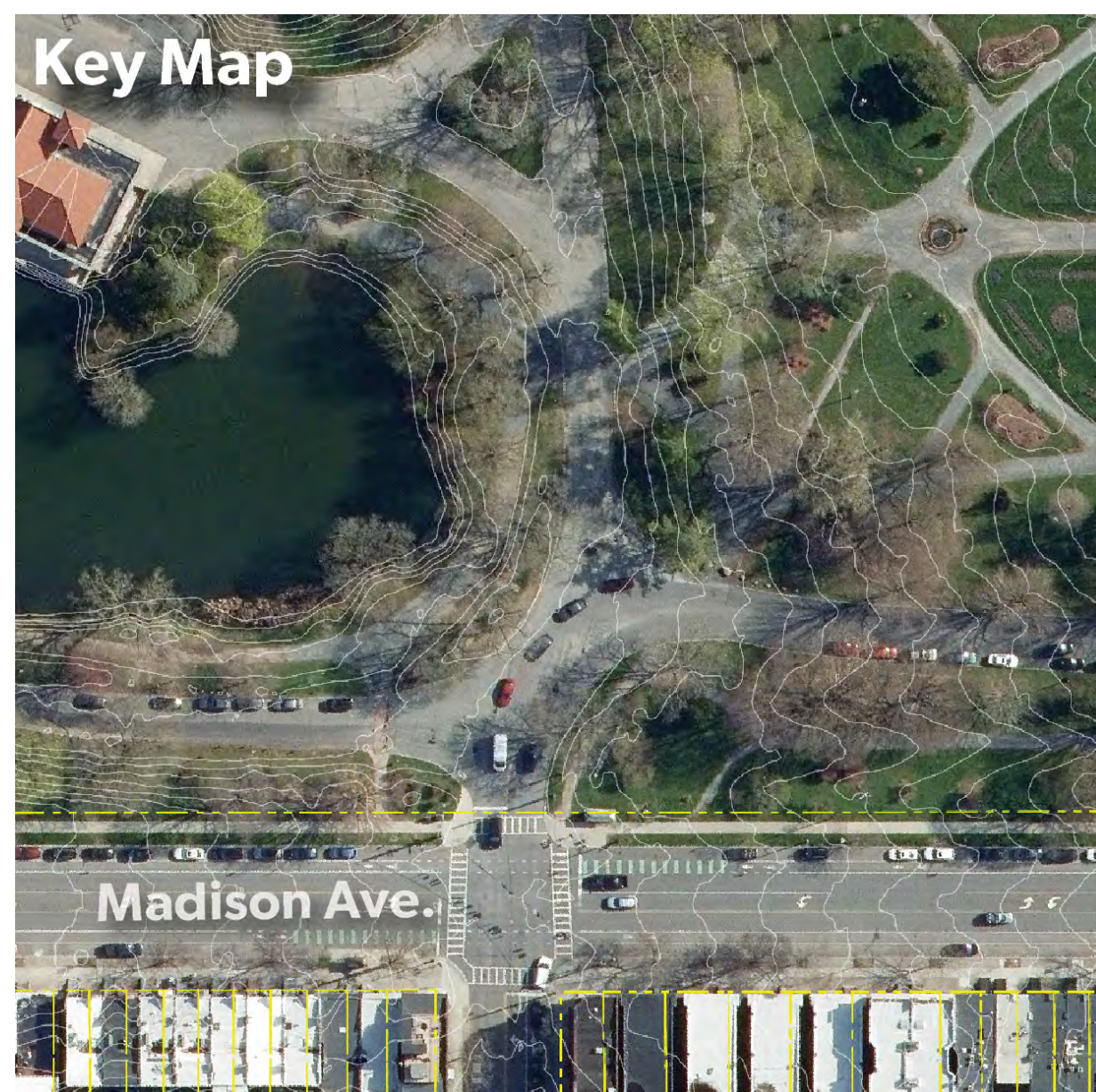
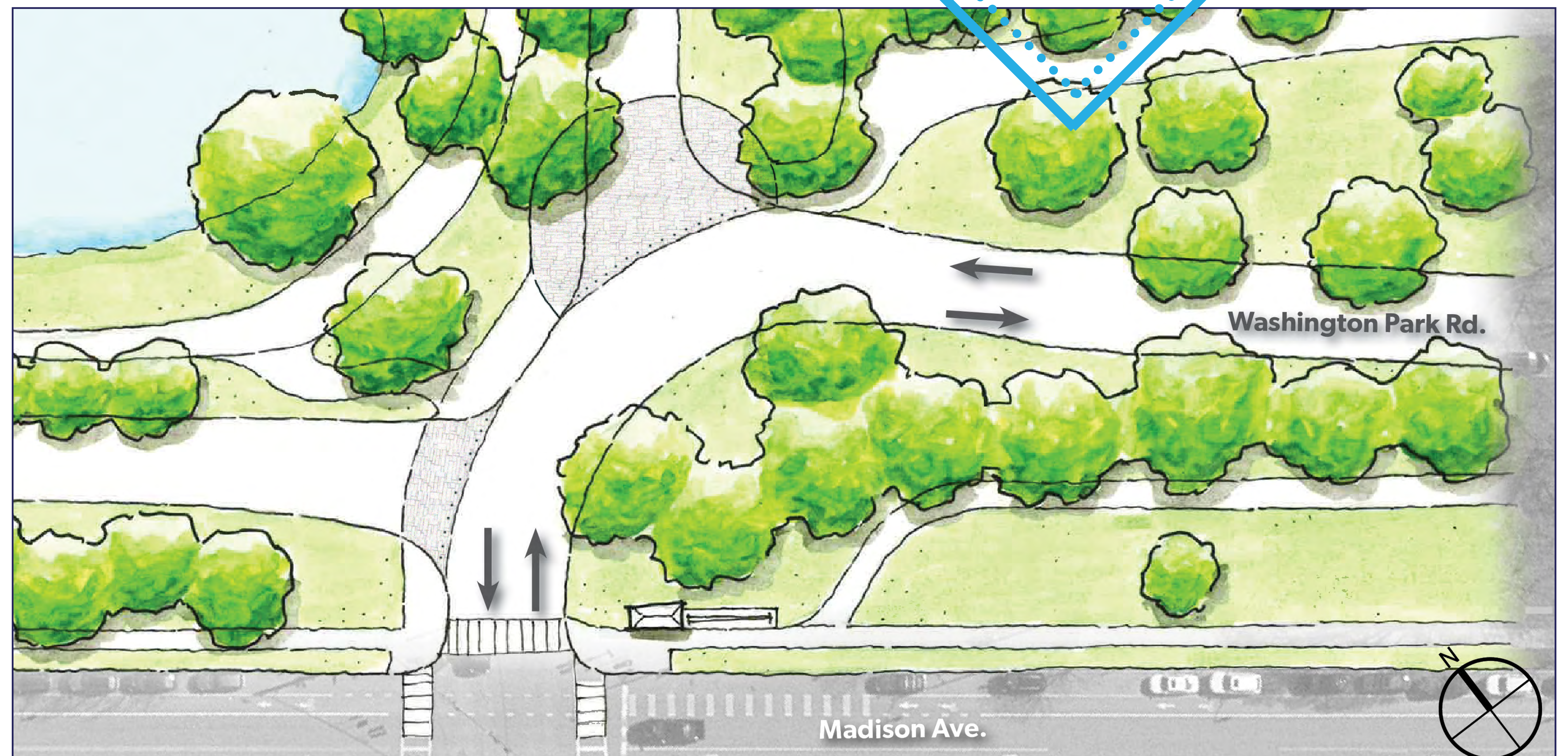


Washington Park Transportation & Pedestrian Improvements Project

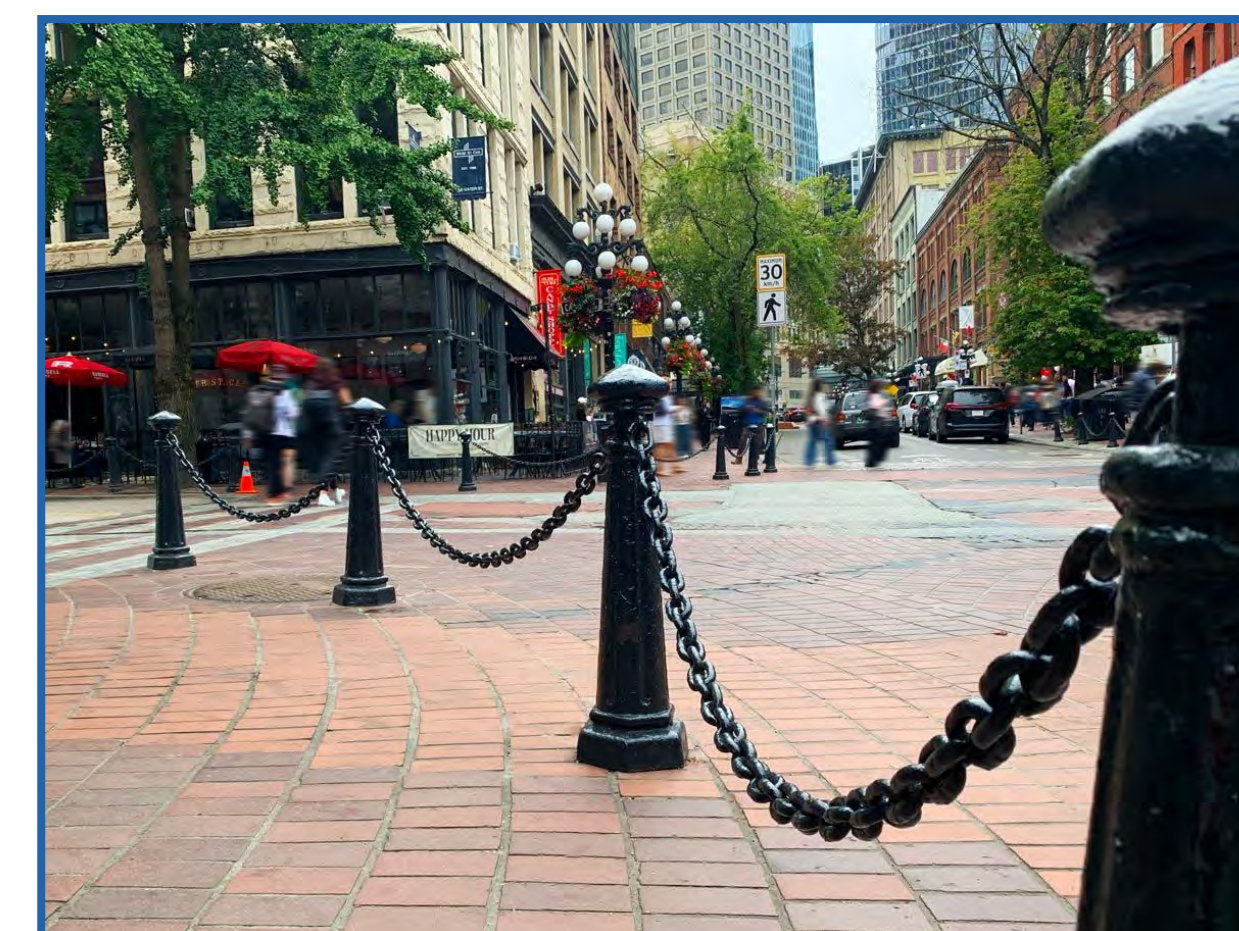
IMPROVEMENT AREAS

ZONE 7 GOALS

- ▶ Extend the curb to calm traffic and better define pedestrian space.
- ▶ Close the existing lake access roads to vehicular traffic and redesign service entrances to provide a consistent appearance with textured pavement and gates/bollards to reduce unauthorized access.
- ▶ Remove or relocate existing crosswalk at curve to improve safety and visibility.
- ▶ Explore the feasibility of providing an overlook area of Washington Park Lake.

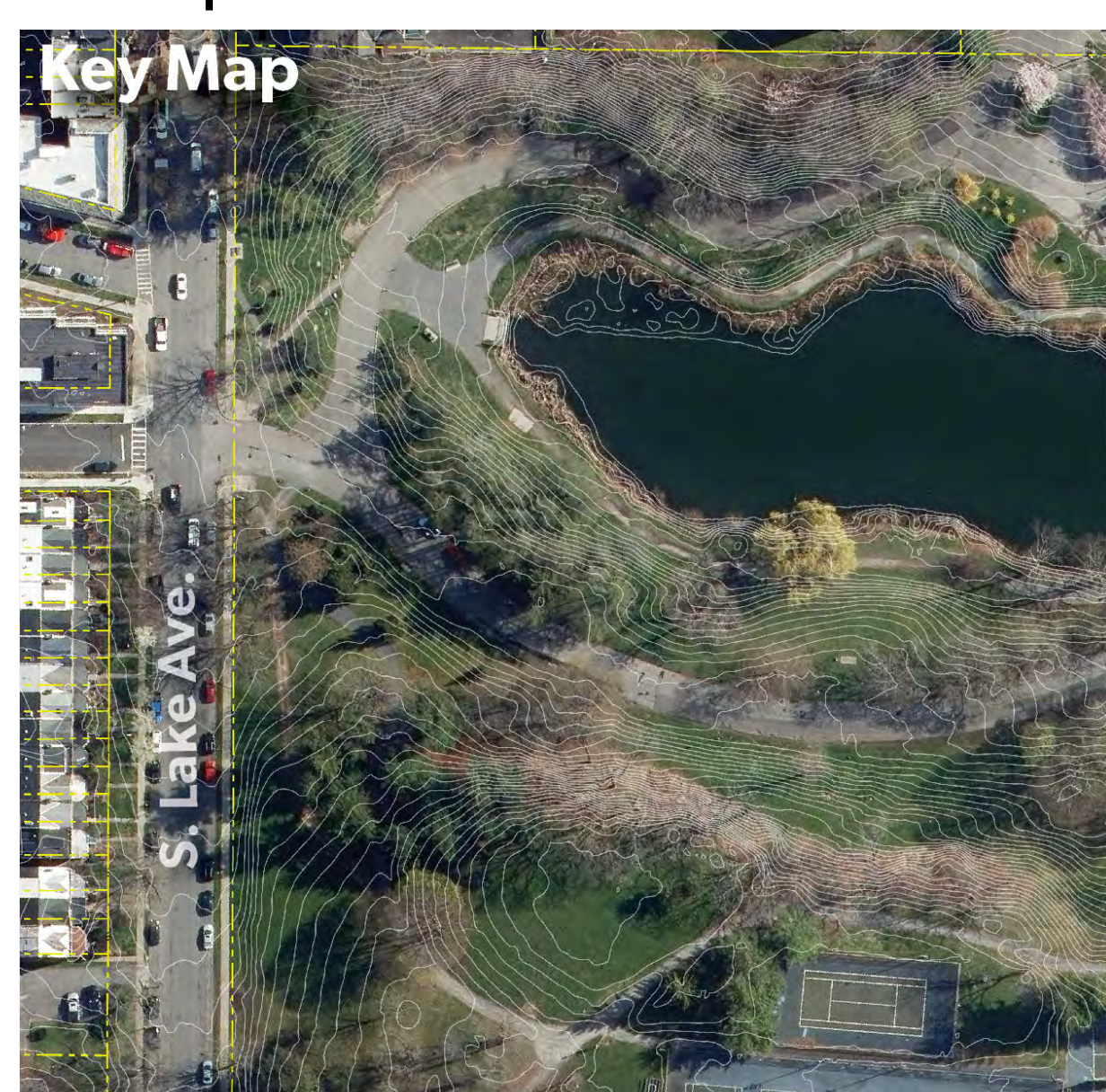


PRECEDENT IMAGES

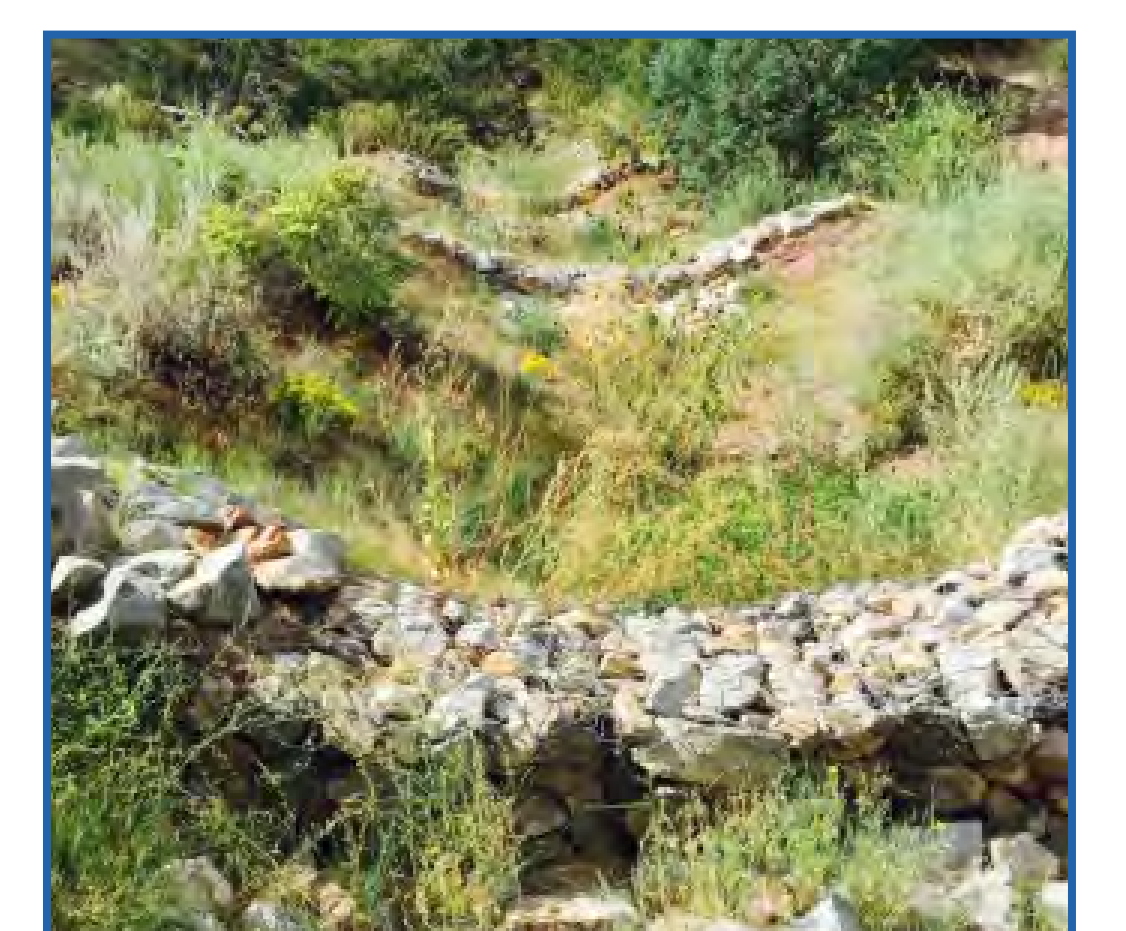
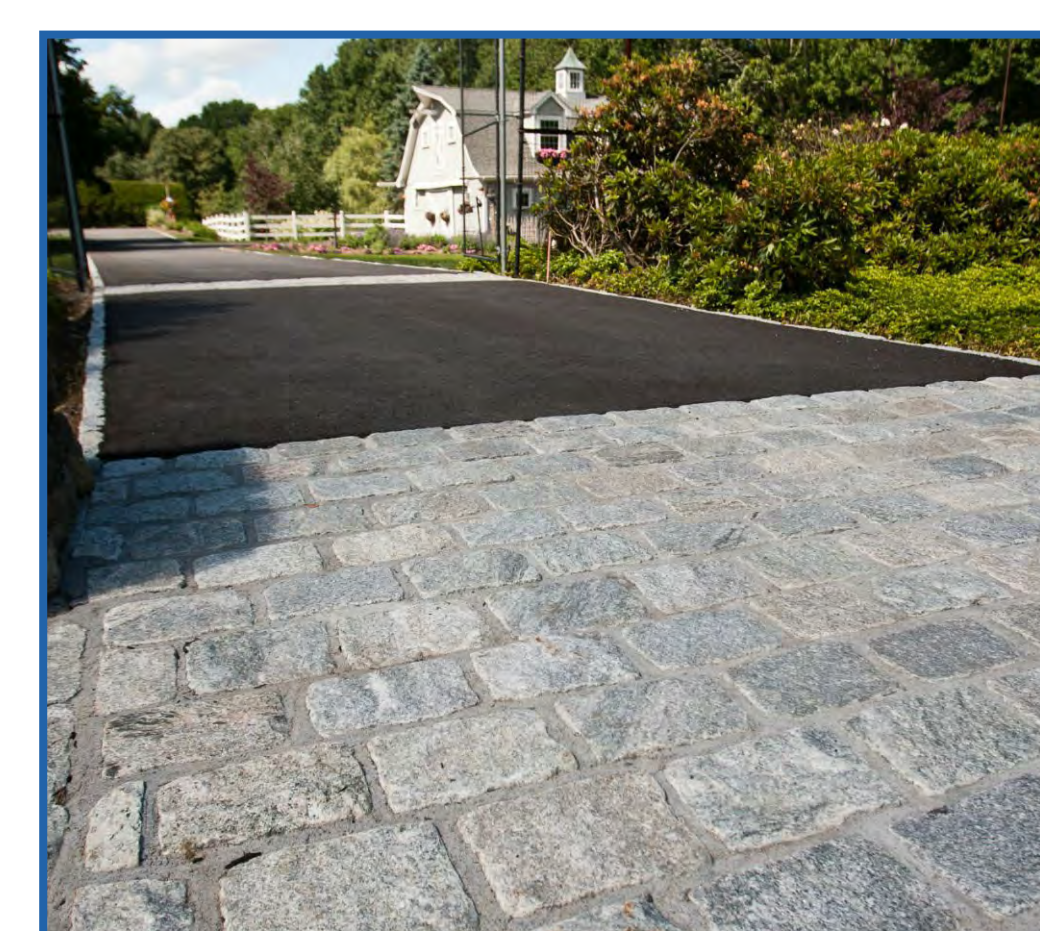
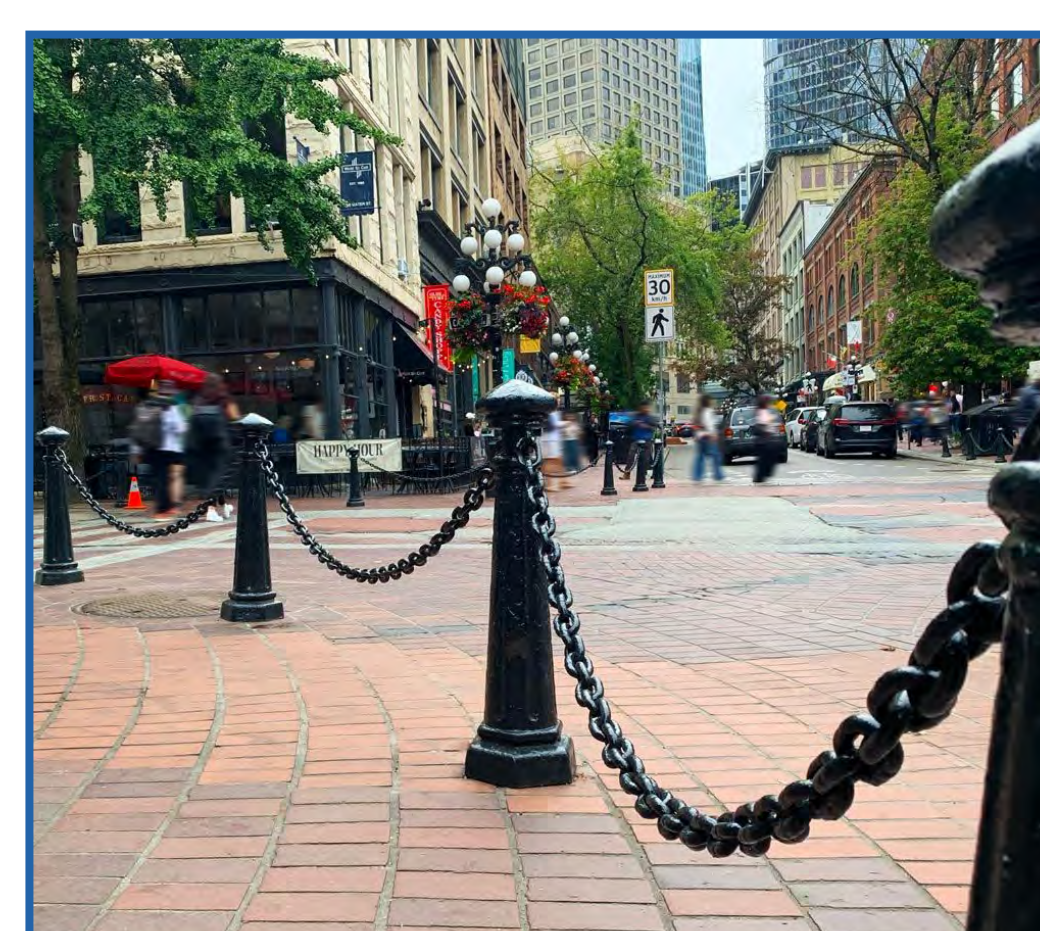
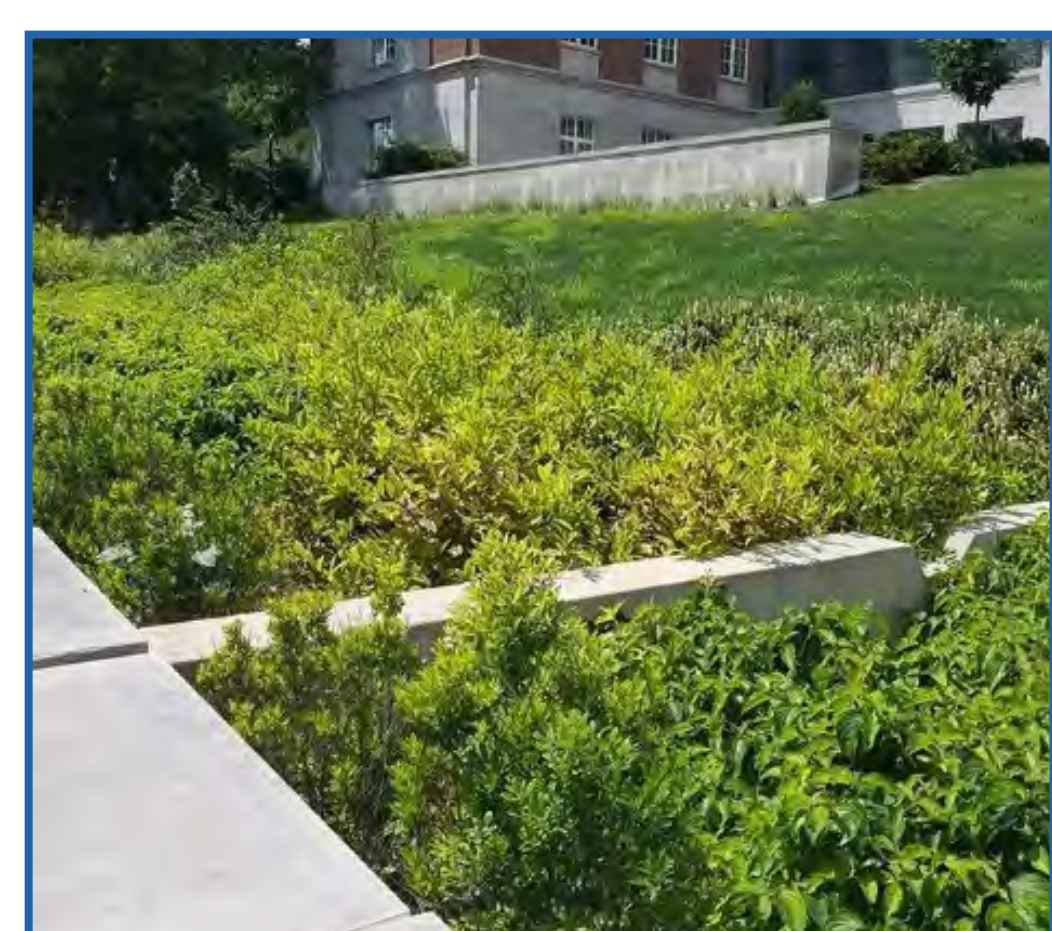


ZONE 8 GOALS

- ▶ Close road south of Washington Park Lake to vehicular traffic and provide enhanced crossing on South Lake Avenue.
- ▶ Redesign service entrances to provide a consistent appearance with textured pavement and gates/bollards to reduce unauthorized vehicular traffic.
- ▶ Remove existing traffic signal and explore gateway treatments with new crosswalks and ADA ramps for improved pedestrian access.



PRECEDENT IMAGES





Washington Park

Transportation & Pedestrian Improvements Project

GENERAL
FEEDBACK

WHAT IDEAS DO YOU LIKE BEST?

WHAT OTHER IDEAS DO YOU HAVE FOR THE PROJECT?